

Enhancing Communication and Collaboration with Mobile Access to Microsoft Communicator Mobile

As part of the Microsoft Office Communication Suite (OCS), Communicator Mobile (COMO) allows corporate users to securely instant message with other employees via desktop and mobile clients. Authenticating your device for COMO use allows you to use Good Mobile Access to stay in touch with your coworkers.



FIGURE 1. Office Communicator

Setting up COMO

Prior to using COMO, contact your IT department to ensure the following:

- Microsoft OCS is deployed for your corporation
- You are enabled to use OCS/COMO

IT supplies you with all necessary configuration parameters for installing COMO on your Good powered mobile device. These parameters are covered below. Once you have confirmed the above steps, you can install COMO.

Installing COMO

To install COMO:

1. Point your mobile device browser to: www.getcomo.com.



FIGURE 2. Get COMO Website

2. The Microsoft powered mobile page will determine whether or not you have a Windows Mobile Smartphone or Professional edition. If for any reason the above settings are incorrect, you can select a different mobile edition or language.



FIGURE 3. Phone Edition

3. Once you have confirmed the settings, click **Download**.
4. Click **Yes** to confirm the COMO download.

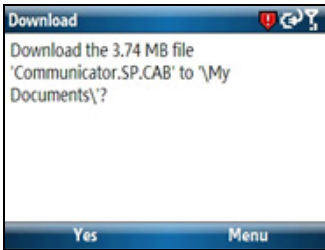


FIGURE 4. Confirm Download

5. The installer may not auto launch after download, so locate the Communicator Mobile icon in your mobile device programs list and then launch it.

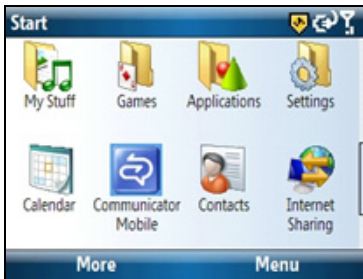


FIGURE 5. Communicator Mobile Icon

6. After you accept the Microsoft Software License Terms, you are taken to the COMO client interface.



FIGURE 6. Microsoft Software License Terms

7. When COMO opens, you are signed out. Click **Options** to begin the log in process.



FIGURE 7. Communicator

8. The key configuration settings you will need to access will be **Account** and **Server**. Select **Account** in the Configuration screen



FIGURE 8. Configuration Screen

9. Under Account you will need to enter:
- Your Corporate Email Address
 - Your Windows User Name (Windows login, in the form of Domain \user)
 - Your Windows password

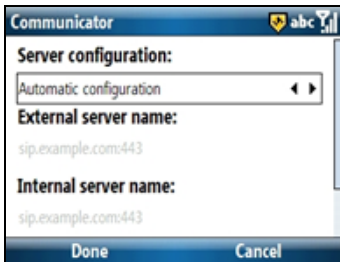


FIGURE 9. Server Configuration

10. Click **Done** to return to the Configuration screen. Select **Server**.
11. Under Server, you will need to enter the following parameters:

- Automatic or Manual Configuration
- External and Internal OCS Server Names
- Whether to connect via TCP or TLS Protocol

Note: If you do not know the settings, contact your IT department.

12. Click **Done** to complete the configuration.
13. Return to the main COMO screen and click **Sign In**. Ensure that you have Good Mobile Access connected (check the Shield color in the upper right hand corner of your device) or COMO will not connect properly.
14. Once COMO has connected successfully, you will see your list of COMO contacts, or you will be given the option to add them.

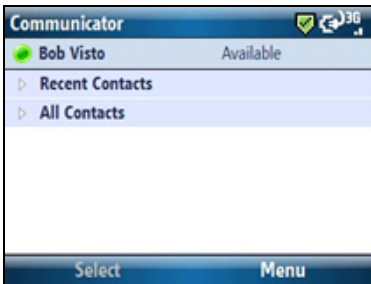


FIGURE 10. Connected to COMO

15. Select a contact to initiate a chat session.



FIGURE 11. Chat Session
