

Enhancing Communication and Collaboration with Mobile Access to Microsoft Sharepoint

If you use Microsoft SharePoint, Good Mobile Access supplies you with secure and immediate mobile access to all your critical SharePoint elements .

With Good Mobile Access, you can easily perform key SharePoint tasks:

- Access, Edit and Utilize SharePoint based documentation
- Upload files to SharePoint from your mobile device
- Add comments and modify SharePoint Portal interfaces
- Access, Add and Edit Calendar and Tasks

To access your important SharePoint portals:

1. Ensure that your account is authenticated and you have logged into the network using Good Mobile Access.
2. Launch your mobile device web browser and type in your SharePoint portal URL.
3. Enter your user name and password used to access the network.

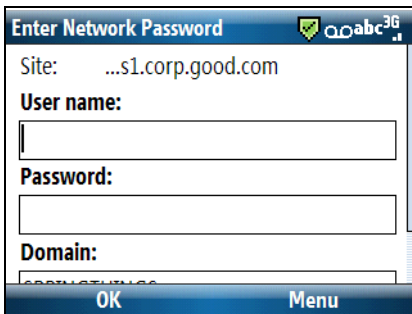


FIGURE 1. Enter Network Password

4. When you successfully log in, the requested SharePoint site displays.

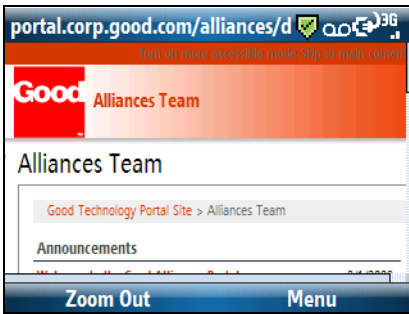


FIGURE 2. Corporate Portal

5. As you are viewing the content via a mobile browser, use the navigation keys on your mobile keyboard to navigate through the page.
6. To open the file, click on the name of the file you wish to access and then accept any prompts when you are asked if you want to download the file.

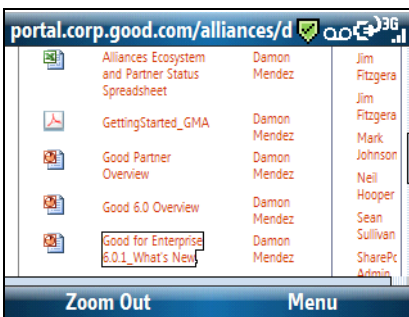


FIGURE 3. Opening a File

7. Upon completion of the download, your mobile device native document viewer will launch your chosen file.

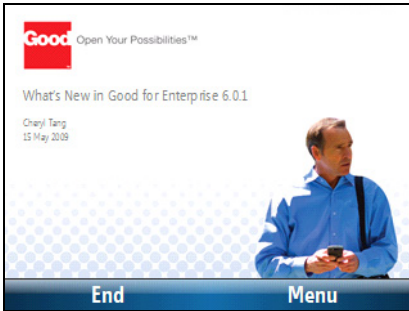


FIGURE 4. Powerpoint Presentation

Microsoft SharePoint 2007 Tips

If you use SharePoint 2007, Good Mobile Access allows you to view SharePoint in simplified WAP view. This view removes all graphics and other elements that could impact quick viewing and access of Share Point data. To access this SharePoint WAP view, append /m at the end of the SharePoint URL when entering it into your mobile browser.

For example, instead of typing <https://web.portal.com/sales>

Type <https://web.portal.com/sales/m>

The screen shots below display same site represented earlier in WAP mode. The first is the Portal home page, and the second is the same document view displayed above.

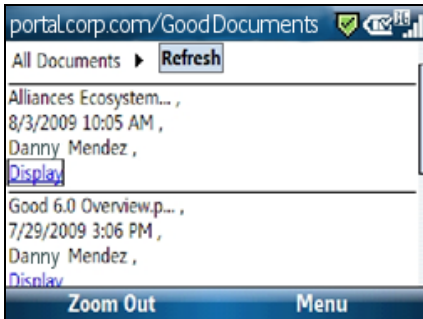


FIGURE 5. Portal Homepage, No Graphics

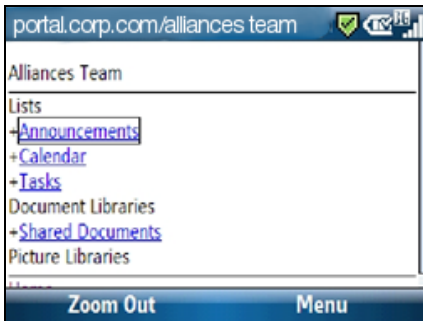


FIGURE 6. Document list, No Graphics
